

# NFLUSE<sup>®</sup>

When Safety Matters



SoundOff  
Signal



# nFUSE™

**nFUSE Exterior Full Size Lightbar**  
**THE RIGHT FEATURES, INCLUDING DUAL-COLOR CAPABILITY, FOR THE RIGHT PRICE.**



## Tech Specs

**INPUT VOLTAGE**  
 10-32 Vdc

**OPERATING TEMPERATURE**  
 -40°C to +65°C

**CURRENT DRAW**  
 36": 12.8 Vdc, 14 Amps or 25.6 Vdc, 7 Amps  
 42": 12.8 Vdc, 16 Amps or 25.6 Vdc, 8 Amps  
 48": 12.8 Vdc, 18 Amps or 25.6 Vdc, 9 Amps  
 54": 12.8 Vdc, 20 Amps or 25.6 Vdc, 10 Amps  
 60": 12.8 Vdc, 22 Amps or 25.6 Vdc, 11 Amps  
 72": 12.8 Vdc, 26 Amps or 25.6 Vdc, 13 Amps  
 Standby current (ignition active): 0.20 Amps  
 Shutdown current (ignition off): 0.0002 Amps

**CIRCUIT PROTECTION**  
 Reverse Polarity, transient voltage, high temperature, over-voltage

**IP RATING**  
 IP65 - Components are conformal coated for maximum water protection.

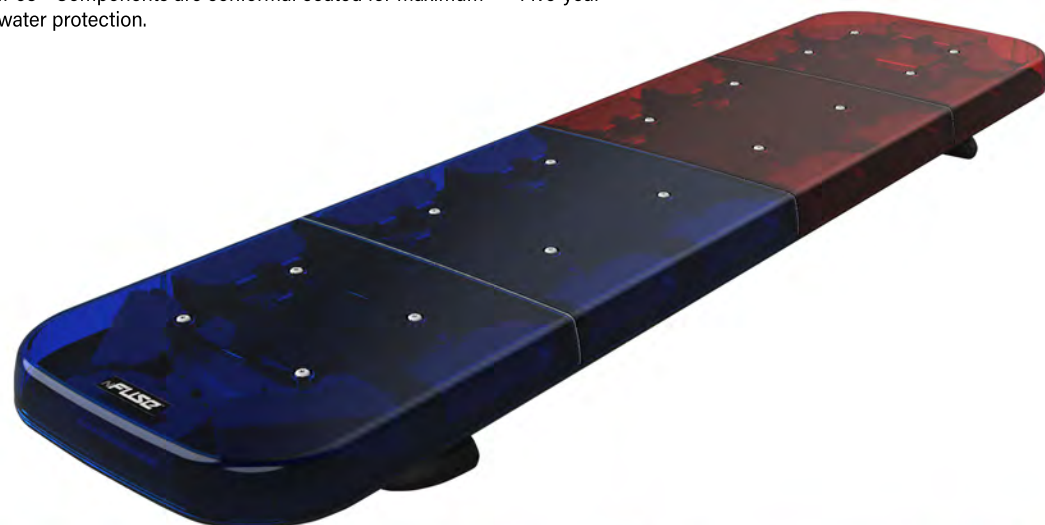
**DIMENSIONS**  
 Lengths:  
 - 10 modules / 609 mm  
 - 14 modules / 914 mm  
 - 16 modules / 1067 mm  
 - 18 modules / 1219 mm  
 - 20 modules / 1372 mm  
 - 22 modules / 1524 mm  
 - 26 modules / 1828 mm

Width: All configurations 305 mm  
 Height: All configurations 48 mm

**MOUNTS**  
 Universal hook kits, Headache rack mounting brackets

**CERTIFICATIONS**  
 SAE J845/J545 Class 1 Certified  
 CA Title 13, Class B Certified

**WARRANTY**  
 Five-year



## Features

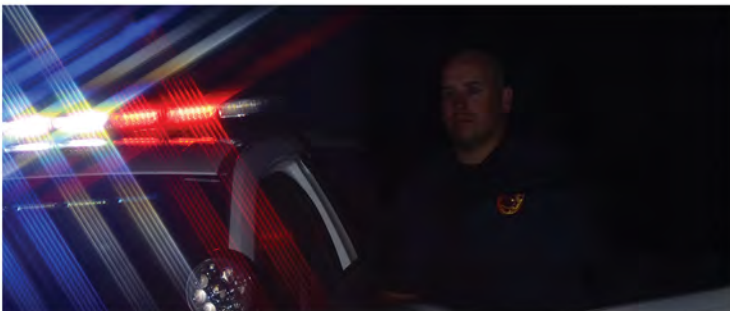
- Slim profile only 48mm available in lengths from 609mm (36") to 1828mm (72") - Modules can be configured as single or dual colour
- Replaceable outer lens available in clear, red, or blue
- Cruise mode
  - An option for clear lens lightbars where the lightbar "glows" providing the effect of coloured lenses for static visibility
- Arrow control modules can be combined with warning colours for maximum functionality
- Easily connects to our nERGY line of sirens and bluePRINT Control System
- Easily programmed using our SoundOff Signal Lightbar Configurator or bluePRINT applications.
- Configurations can be enhanced to suit the users' needs providing maximum functionality
- Over 50 flash patterns, including cruise mode, takedown, alley lights and arrow patterns.
- Up to 8 Flashing Modes
- Ambient light sensor for automatic night-time dimming

# NFLUSE<sup>®</sup>

When Safety Matters



SoundOff  
Signal



**Door Open Cut**

Automatic lightbar end cut when opening the drivers door. This feature prevents the "blinding effect" caused by bright LED's when exiting the vehicle.

**Alley and Scene Lighting**

Alley lights can be optioned on the end and at 45 Degree angle forward or backward to provide brilliant visibility

Unmatched scene light coverage with options for 360-degree white light. Take downs and alley lights make the nFuse is the perfect lightbar for safe traffic stops and working during low light situations.



**Intersection mode**

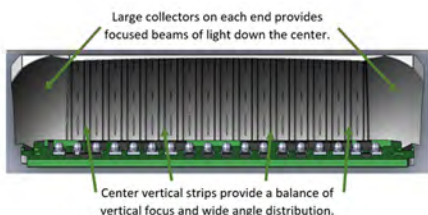
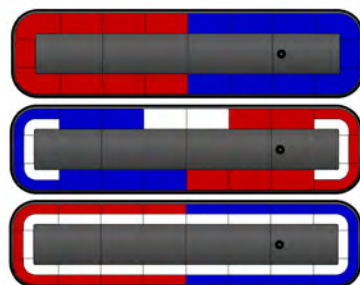
The nFuse Lightbar can be configured for short pattern changes at the press of the horn, increasing visibility and confidence when entering intersections or areas with limited off-angle visibility.





**Lightbar Modules**

- nFUSE LED Lightbar modules can be configured as single, or dual colour for maximum functionality. \*All in ONE module\* - Inboard modules are available in single colour 6 or dual colour 12 LEDs
- Corner modules are offered in single colour 6 or dual colour 12 LEDs
- Discrete rear-arrow control modules can be combined with warning colours for maximum functionality
- Takedown modules can be designated anywhere on the light bar



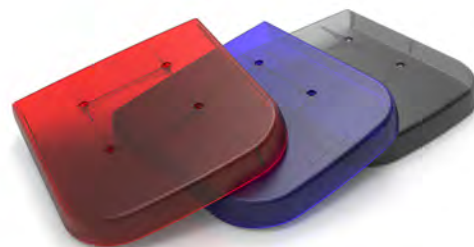
**Nexus Technology**

Ensures that the lightbar will remain illuminated no matter the conditions. If one or two modules or a circuit board were to become damaged and shut down, the remaining lightbar modules will remain on allowing you to safely complete your emergency run.

**Replacement Lens**

Genuine SoundOff Signal nFUSE Lightbar Lens. Available in 3 colour options .

Clear, Blue and Red



**nFUSE Mounting Feet**

Standard mounting feet are available for the nFUSE lightbars they fit the length-of-the-bar mounting tracks, making installation easy for any roof or flat mounting surface.



**Scene Lighting**

- Lightbars with multi-colour modules that include white LED's are capable of providing a full 360 degrees of intense scene lighting
- nFUSE offers all white illumination (up to 360 degrees) to intensely light up investigative scenes and dangerous night-time environments.
- nFUSE can be customized to suit your needs



**Quick Change Componentry.**

- nFUSE was designed with your fleet management team in mind. Snap-in components allow for easy reconfigurations and reduced service time down the road.

- Additionally, nFUSE offers modular capability which means you can upgrade your basic lightbar later to include a rear arrow and even change a single colour bar to a dual colour version by simply switching out modules.



**Easy to Use Programming**

Windows based PC application simplifies programming and enhances configurability and control.

Other user configurable options include cruise mode, front/rear/corner cut off inputs, night-time manual dimming, 32 programmable flash patterns, steady burn and cruise

**OzLED**

For all sales enquiries please contact the OzLED. Australia's Authorised SoundOff Signal Distributor

sales@ozled.com.au  
07 3205 4355  
www.ozled.com.au